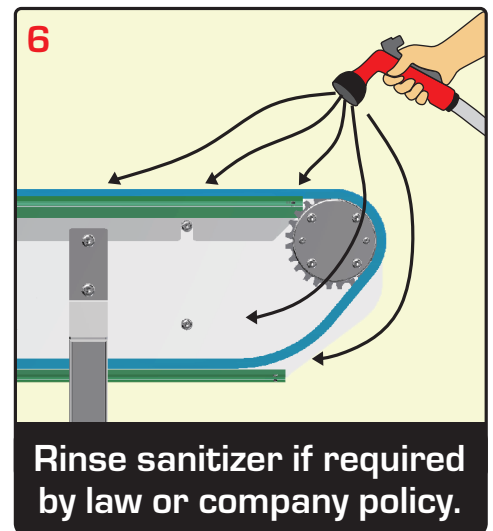
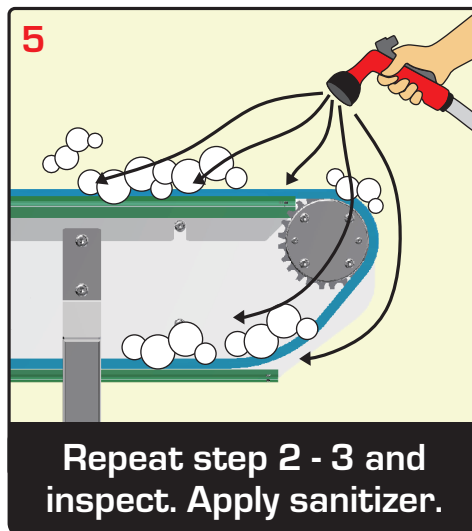
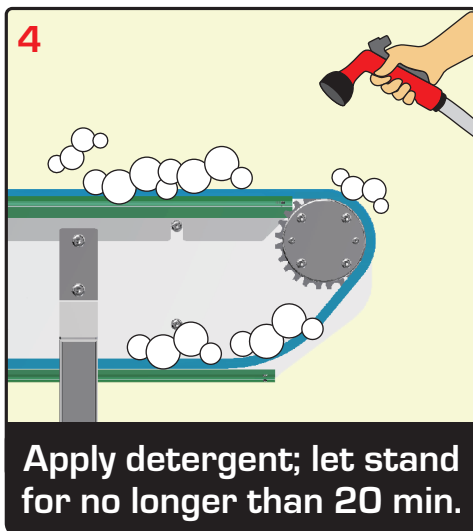
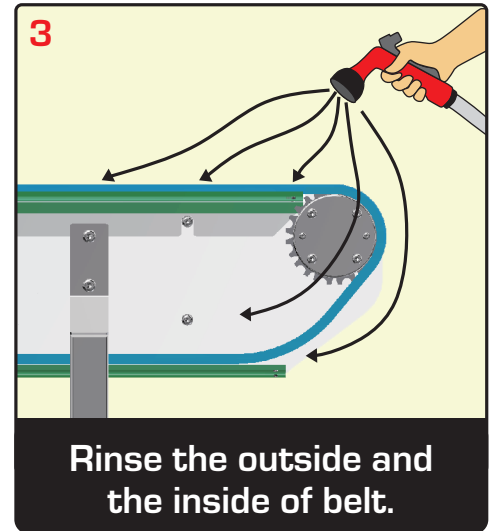
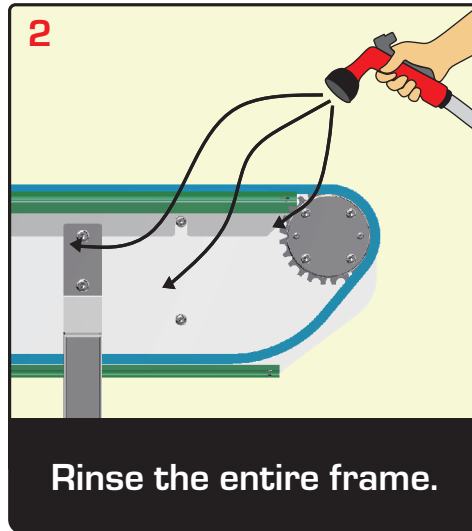
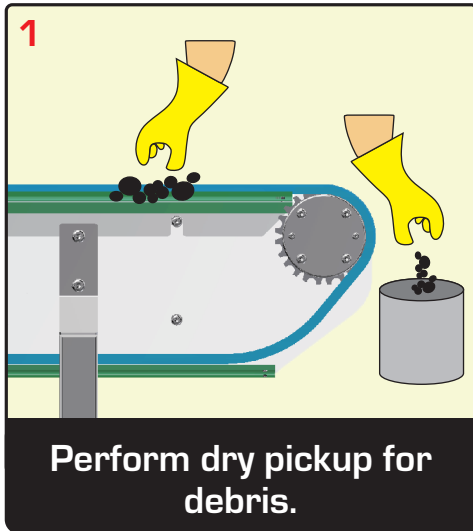


# SANITATION GUIDELINES

## MODULAR BELT CONVEYOR



Recommendations	Sanitation Do's and Dont's
<p>Water temperature: 47° -54° C (120°- 140° F)</p> <p><b>Detergent: *</b></p> <ul style="list-style-type: none"> <li>• Daily = chlorinated alkaline used as directed by chemical supplier</li> <li>• Periodic = light acid used as directed by chemical supplier to remove mineral build up</li> <li>• Sanitizer = chlorine (200ppm or less for acetal belts) quarternary ammonium, peroxyacetic acid used as directed by chemical supplier</li> </ul> <p><i>*NOTE: More is NOT better and can lead to corrosion and belt degradation.</i></p>	<p><b>DO</b></p> <ul style="list-style-type: none"> <li>• Clean the belt on the conveyor</li> <li>• Clean the belt as it goes around the sprockets</li> <li>• Use belt lifters</li> <li>• Use open conveyor frames</li> </ul> <p><b>DO NOT</b></p> <ul style="list-style-type: none"> <li>• Use pipes or poles to lift the belt (especially when running)</li> <li>• Soak the belts in "caustic baths"</li> <li>• Walk or stand on belts</li> </ul>

Follow Sosial Media Kami

@connectautomationindonesia @ptenviroener